

 **WÜRTH | INDUSTRY**

# INDIRECT MATERIALS

**Product solutions.  
Supply systems. Service.**



# CONTENTS

Holistic indirect material supply	3
Product overview	6
Chemical products	8
Occupational safety	16
Tools & power tools	22
ORSY®mat vending machines	28
Services	32
Efficient factory equipment	36
Close. Closer. Würth!	46
Würth Industrial Park	48
Download centre	50

## **Our promise:**

The right product, at the right time, in the right quantity, at the right price, with the right quality, to the right place.

**Indirect materials. With certainty.**

Dear ladies and gentlemen,

With this brochure, we invite you to discover our world of indirect materials. Indirect materials are indispensable for designing the work processes efficiently and securely. With our extensive portfolio, we not only offer you high-quality products, but also intelligent system solutions that make your everyday life easier and sustainably optimise your processes.

In this brochure, you will find everything at a glance: from high-performance chemical products and modern occupational safety to high-quality tools and sophisticated workplace solutions. Our range is complemented by customised supply systems and services that go far beyond the product itself.

Our aim is to offer you not just the right product, but also innovative concepts and smart solutions to make the supply of your indirect materials as simple and efficient as possible. Because your productivity, product availability and safety are our top priority.

Let us inspire you - discover the possibilities in which our solutions can enhance your everyday work.

We hope you enjoy reading - we are happy to answer any questions you may have!

Best regards,

Heiko Noack  
Head - INDIRECT division  
Würth Industrie Service GmbH & Co. KG





**ALL FROM ONE SINGLE  
SOURCE.  
WITH CERTAINTY.**



## **YOUR BENEFITS AT A GLANCE**

- Large **product selection**
- Strong and innovative **Würth brand**
- Access to all relevant **third party brands**
- **Consultation** and **support** by trained specialists
- **Worldwide supply** across all production sites
- **Supplier reduction** - One supplier for all parts
- **Product standardisation**
- **Process savings:** Automated, needs-based supply of items through intelligent system solutions
- **Additional services** such as use of the Würth shops, PPE manager, ORSY®online etc.
- Opportunity to participate in **specialist and customer events**



# THE RIGHT PRODUCT.

From classic everyday helpers,  
environmentally friendly alternatives to  
innovative game changers.



**TECHNICAL CHEMICALS**



**OCCUPATIONAL SAFETY**



**TOOLS AND POWER TOOLS**



**EFFICIENT FACTORY EQUIPMENT**



# CHEMICAL PRODUCTS.

Versatile solutions for maintenance,  
repair and servicing.



**REFILLING SYSTEMS AND  
REUSABLE SYSTEMS**



**SEALANTS**



**ADHESIVE TAPES, MASKING  
TAPES AND SEALING TAPES**



**ADHESIVES**



**SURFACE PROTECTION, PAINTS  
AND COATINGS**



**CLEANING AND  
CARE PRODUCTS**



**LUBRICANTS AND  
RUST REMOVERS**



**ENVIRONMENTALLY FRIENDLY  
ALTERNATIVES**



**SERVICE PRODUCTS**

# BRANDS

In addition to our Würth brands, we have other third-party brands in our product range. Here are few examples of the well-known Würth brands in our chemical range:



# HAZARDOUS MATERIALS MANAGEMENT

We offer you the comprehensive online tool **isi!!!** for your documentation related to hazardous materials.

Take advantage of this tool and save time and money!

- Keep safety data sheets up to date
- Create operating instructions
- Create directory of hazardous materials and much more.



More information at  
[www.wuerth-industrie.com/  
hazardous-management](http://www.wuerth-industrie.com/hazardous-management)

Simply register in the Würth  
Online Shop and get started.

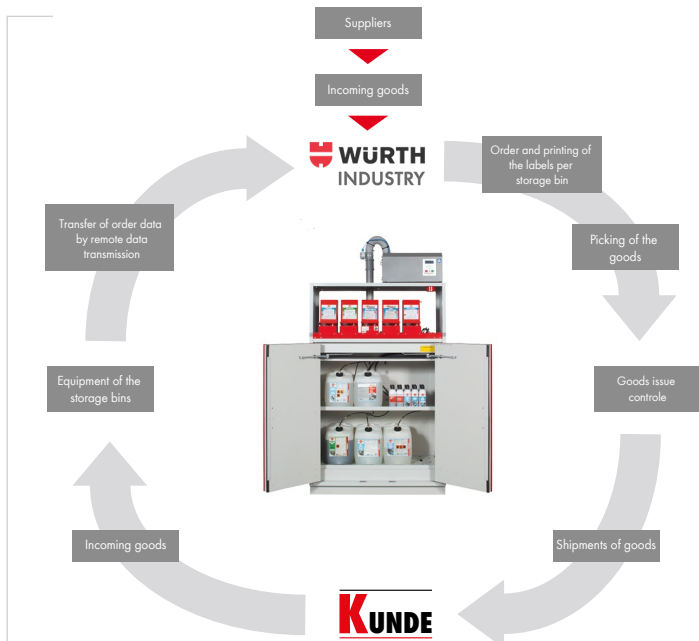
# MORE TIME FOR CORE WORK.

Just as important as the selection of suitable chemical products is the availability of the products. Together with you, we develop the best possible logistics solution for securely supplying chemical products according to your individual needs.

- centrally in the material warehouse
- centrally at a defined location in production
- decentralised in every area of production with the required items

## ORSY<sup>®</sup>MAT CHE

Our vending machine ORSY<sup>®</sup>mat CHE is used to store hazardous materials safely, clearly and legally. Like the other ORSY<sup>®</sup>mat models, the system also recognises the withdrawal of items and automatically triggers re-orders, if necessary. This means that you can also rely on a secure supply of chemical products.



## CHEMICAL KANBAN

Do you need chemical products regularly? The chemical Kanban is used for automatic replenishment in production or storage. Based on the principle of a conventional Kanban system, we ensure that your technical chemical C-Parts are available in the right quantity and at the right time at the required location. This is controlled via a barcode-based label with all relevant data such as storage location and item description.

# REFILLO<sup>®</sup>MAT 2.0

## SIMPLE, REUSABLE, ECONOMICAL.



### Simple

Insert the reusable can into the REFILLO<sup>®</sup>mat 2.0, wait until it is filled safely and automatically, unlock it and continue working immediately with a full can.



### Reusable

Refilling instead of discarding! The refillable reusable can produces significantly less waste compared to conventional disposable cans! Less packaging, more added value.



### Economical

Active ingredients in bulk packaging are cheaper than in conventional individual spray cans. This means that the REFILLO<sup>®</sup>mat 2.0 is not only practical, but also saves money every day with every can filled.



### Smart

The digital display guides you intuitively through the filling process and provides an overview of the fill levels. The operating materials are thus reordered automatically and in good time.



## FEATURES:

- + Not dependent on compressed - sprays with pure air
- + Integrated display for user guidance and for additional information
- + Automated reordering of operating materials
- + Reduction of VOC balance



More information at  
[www.wuerth-industrie.com/refillo-mat](http://www.wuerth-industrie.com/refillo-mat)

# STORAGE SYSTEMS FOR HAZARDOUS MATERIALS

You need to observe various legal regulations when storing hazardous materials. We offer a comprehensive product range of safety cabinets, material cabinets as well as environmental and chemical cabinets for safely storing your chemical products in a legally compliant manner.



More information at  
[www.wuerth-industrie.com/safety-cabinets](http://www.wuerth-industrie.com/safety-cabinets)



# SUSTAINABLE PRODUCT ALTERNATIVES

When expanding our product range, we focus on products that combine good efficacy with sustainable ingredients. We evaluate all these products according to four criteria:

- Climate
- Environment
- Resources
- Emissions/pollutants

We also take into account the social standards of the supply chain.

More information at  
[www.wuerth-industrie.com/chemical-products](http://www.wuerth-industrie.com/chemical-products)



# TIME FOR IMPULSES.

## TECHNICAL SEMINAR OCCUPATIONAL SAFETY / HAZARDOUS MATERIALS MANAGEMENT

**We cordially invite you to join us!**

Your employees are exposed to different potential hazards on a daily basis. The area of operational safety, with all its components and influencing factors, is becoming increasingly important in many manufacturing companies.

In order to keep you informed about latest developments and trends, we regularly invite you to our technical seminar, which takes place annually over two and half days including an evening event in Bad Mergentheim.

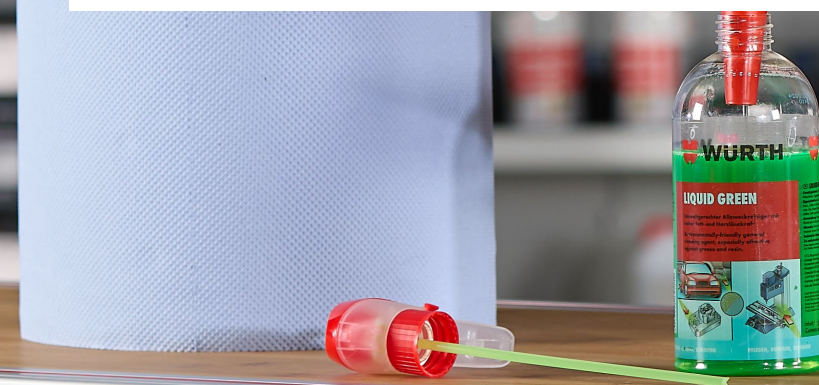
As a special highlight we can offer you "2 VDSI points for occupational safety" for your participation after consultation and confirmation by the Verband Deutscher Sicherheitsingenieure e.V. (VDSI) (Association of German Safety Engineers).



You can find all current event schedule at  
[www.wuerth-industrie.com/events](http://www.wuerth-industrie.com/events)



**Use this opportunity to interact with participants from other companies, ask questions and discuss different solution approaches.**





# OCCUPATIONAL SAFETY.

A safe feeling from head to toe.



**RESPIRATORY PROTECTION**



**EYE PROTECTION**



**HEARING PROTECTION**



**HAND PROTECTION**



**SKIN PROTECTION**



**WORKWEAR**



**SAFETY SHOES**



**HEAD PROTECTION**



**FALL PROTECTION**



**WELDING PROTECTION**



**PROTECTIVE SUITS**



**EXOSKELETONS**

# BRANDS

In addition to our Würth brands, we have other third-party brands in our product range.

Here are few examples of well-known Würth brands in our occupational safety range:



# PPE MANAGER

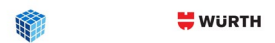
The large number of different applications and the use of various chemical products, power tools, tools and new technologies in companies require sound expertise in the field of occupational safety - both for application and for supply and storage. To reduce the time and effort involved, we offer you an innovative internet-based service with the PPE manager.

- Supports in the planning of company-specific occupational safety measures
- Supports in the selection of suitable PPE items (based on your risk assessment)

Your customised occupational safety plans show which protection is required in which case, tailored to the respective products. You and your employees are optimally prepared and protected from head to toe.



More information at  
[www.wuerth-industrie.com/psa-manager](http://www.wuerth-industrie.com/psa-manager)



## PSA-GESAMTPLAN

Arbeitsbereich	Arbeitsauftrag	Arbeitsmittel	Arbeitsmittel	Arbeitsmittel
Arbeitsbereich	Arbeitsauftrag	Arbeitsmittel	Arbeitsmittel	Arbeitsmittel
Arbeitsbereich	Arbeitsauftrag	Arbeitsmittel	Arbeitsmittel	Arbeitsmittel
Arbeitsbereich	Arbeitsauftrag	Arbeitsmittel	Arbeitsmittel	Arbeitsmittel

## TEXTILE FINISHING

### We turn your clothing into something special

We customise your workwear with lettering, names and logos. You can choose between embroidery and textile transfer printing and have various options to position the logos.

You can also rely on demand-orientated, automated replenishment for your individual workwear - for example via our ORSY<sup>®</sup>mat vending machines.



More information at  
[www.wuerth-industrie.com/workwear](http://www.wuerth-industrie.com/workwear)



## SUSTAINABLE PRODUCT ALTERNATIVES

We are also continuously expanding our product range to include more sustainable items in the PPE and workwear.

Do you know, for example, our TIGERFLEX<sup>®</sup> Plus ECOLINE protective glove? It is a universal glove produced in an environmentally friendly way that combines ecology with excellent protective properties and a wide range of applications. The glove offers a breathable TIGERFLEX<sup>®</sup> coating made of nitrile foam with high wearing comfort and optimum grip. The resource-efficient support fabric made from approx. 88% recycled PET bottles and the 100% plastic-free packaging round off this sustainable and innovative protective glove.



More information on our sustainable occupational safety products at  
[www.wuerth-industrie.com/sustainable-ppe](http://www.wuerth-industrie.com/sustainable-ppe)





# EXOSKELETONS

## The ergonomic boost for a more comfortable working.

Activities in logistics, overhead assembly work or lifting heavy components in manufacturing require one to often maintain a repetitive posture or to lift continuously. Exoskeletons can be used by your employees to prevent muscle or joint injury and to relieve strain.

Exoskeletons are external support and assistance systems attached to the body to support and protect certain parts of the body while lifting or carrying loads. During strenuous work, exoskeletons ensure the optimal posture thanks to their ergonomic design - whether it is for the back, neck, knee, wrist or torso.

The use of exoskeletons can significantly help to prevent musculo-skeletal disorders, protect the health of your employees, improve the working conditions and ultimately, reduce the absenteeism.



Relief to muscle(s)



Improved posture



Higher productivity



Better ergonomics



Reduction in sickness-related absence



More information at

[www.wuerth-industrie.com/exoskeletons](http://www.wuerth-industrie.com/exoskeletons)



# TOOLS AND POWER TOOLS

Quality products you can rely on.



**POWER TOOLS**



**HAND TOOLS**



**MEASURING**



**WELDING**



**GRINDING**



**DRILLING**

# BRANDS

In addition to our Würth brands, we have other third-party brands in our product range.

Here are few examples of well-known Würth brands in our tools range:



# WÜRTH MASTER POWER TOOLS

## Cordless power tools, electric power tools, pneumatic tools

Discover our attractive range of over 300 WÜRTH MASTER power tools for practically every application - from drilling, screwing and sawing to grinding, cutting, fastening and bonding to riveting, welding, measuring and cleaning.

### Your benefits:

- Minimisation of administrative work
- Full range of services
- Personalisation
- Fixed financial planning
- Increased productivity
- Optional theft insurance



More at

[www.wuerth-industrie.com/tool-leasing](http://www.wuerth-industrie.com/tool-leasing)



# M-CUBE CORDLESS TECHNOLOGY



## One system. All possibilities.

Our M-CUBE power tools offer you maximum flexibility and mobility in your work - tools that make your work as easy and your results as good as possible. The powerful and long-lasting M-CUBE rechargeable batteries in volt classes 12 and 18 are compatible with all M-CUBE cordless power tools in the same volt class. The M-CUBE cordless power tools are also covered by our 3-year Würth power tools warranty on damage caused by wear and tear and replacement of batteries and chargers.

### Your benefits:

- Optimum heat dissipation
- LED display
- Intelligent battery and individual cell monitoring
- Stability



# WÜRTH POWER TOOLS WARRANTY

## Additional safety

More service, more safety! With the Würth power tools warranty, you can always rely on the quality of your Würth power tool. You benefit from the Würth power tools warranty from the moment you purchase. And all at no extra cost and no hassle of registration.

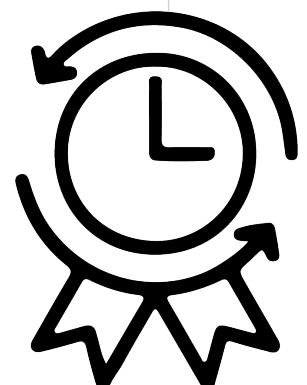
## This is what the Würth power tools warranty includes

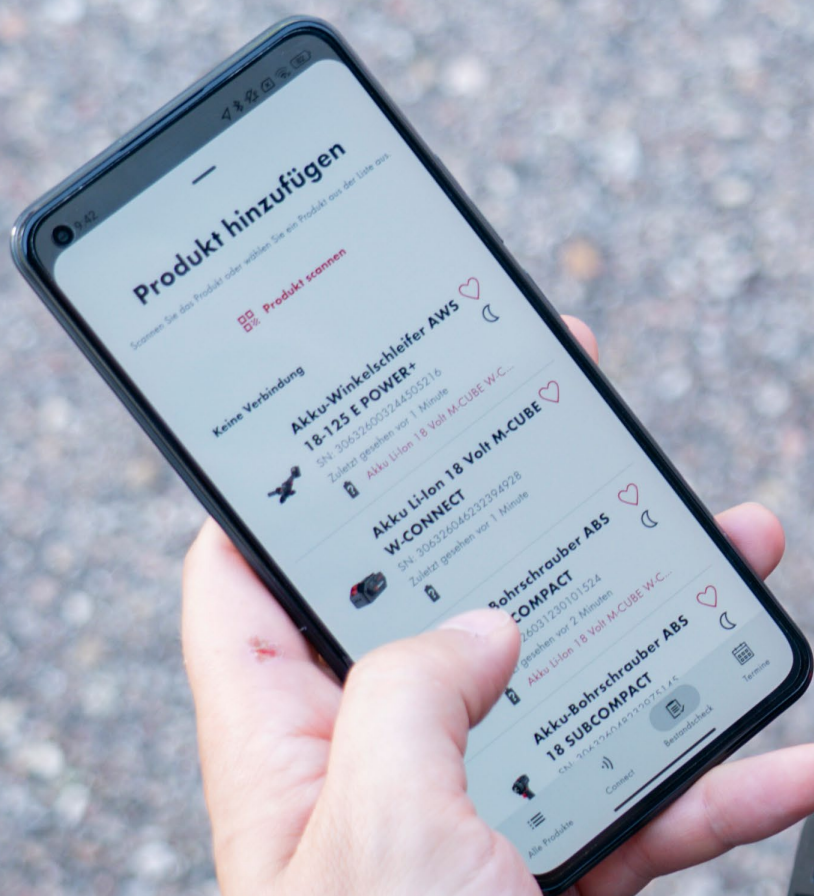
- Würth power tools warranty (from date of purchase)
- 3-year warranty on damage caused by wear and tear and replacement of batteries & chargers\*
- Warranty (from date of purchase)  
3-year warranty on manufacturing and material defects



More at  
[www.wuerth-industrie.com/tools-warranty](http://www.wuerth-industrie.com/tools-warranty)

\*This does not apply to damage caused by improper use, overloading or failure to observe the operating instructions.





# ORSY® ONLINE

**Clever device fleet management - for greater efficiency and security**

No matter how many devices, locations and employees you have in your company or how large your vehicle fleet is, ORSY®online gives you a complete overview. You will no longer miss inspection and maintenance deadlines and its several intelligent functions help you to organise your administration clearly and easily, exactly in line with your company structure. Whether it is a drill, ladder or personal protective equipment - the tedious search for answers is now over!



Find out more about ORSY®online at  
[www.wuerth-industrie.com/orsyonline](http://www.wuerth-industrie.com/orsyonline)

# W-CONNECT

## Connected operating materials

W-CONNECT is a system that makes the connection of operating materials more digital and smarter. The W-CONNECT components and the ORSY® online app create an ecosystem in which you can manage and control your operating materials digitally. This ensures a reliable user experience with the best possible work results. Discover the benefits of the W-CONNECT ecosystem with functions and components that simplify your work.

### Maximum efficiency

- No searching, just finding
- Operating materials at a glance with just one click
- Increase productivity - minimise wear and tear
- Your material, your power tool - perfectly matched

### Your digital tool

- Localisation
- Inventory check
- Parameterisation
- Application consultant



More at

[www.wuerth-industrie.com/wconnect](http://www.wuerth-industrie.com/wconnect)



# ORSY® FLEET

## Fleet management

ORSY®fleet is your all-round package for maximum productivity and minimum administrative effort for more than 300 WÜRTH MASTER power tools.

### Your benefits:

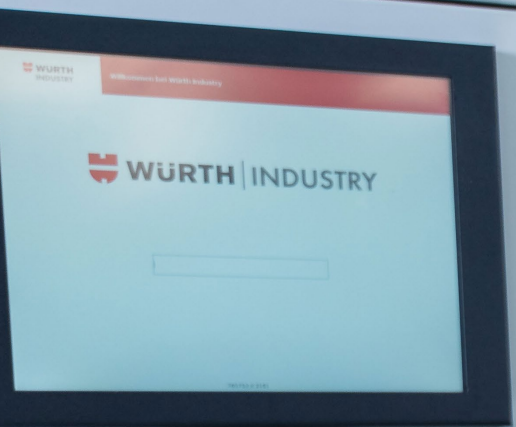
- Repairs including wear and tear, batteries and calibration of measuring equipment are included
- If you renew your contract, you will receive the latest generation of the respective power tools at the end of your selected duration
- On request, you can rent power tools in the event of repair and benefit from rental power tools to cover peak demand
- With optional theft insurance, you are always on the safe side
- Use of the online operating material management system ORSY® is included



More at

[www.wuerth-industrie.com/orsyfleet](http://www.wuerth-industrie.com/orsyfleet)





## YOUR BENEFITS

- 24-hour availability of goods
- Access only to authorised persons
- Automated purchase
- Clear reporting for more transparency
- Reduced costs through reduced consumption

# ORSY<sup>®</sup>MAT

Is your glove defective, is the new respiratory protection due? The ORSY<sup>®</sup>mat is the ideal solution for consumables and durables that are issued to individuals and should be available at all times. Authorised employees access the material, the system documents all processes and automatically reorders.

## **What is ORSY<sup>®</sup>MAT suitable for?**

The system is suitable for all common components of personal protective equipment, workwear, tools, power tools and chemical products. The dispensing is controlled which in turn ensures careful handling and measurably reduces consumption.

## **User interface**

- Customised access and rights assignment
- Assignment of cost centres or order numbers
- Menu available in different languages

## **Access types**

- Würth authorisation cards, PIN or barcode
- Compatible with several access and time recording systems

## **Service**

- Optional filling by our employees
- Regular order and issue statistics by e-mail
- Technical support via hotline or on site

# OUR VENDING MACHINES AT A GLANCE.

The special feature of these four types of vending machine is their customised configuration. The FP, RT, HX and DR Light vending machines can be modularly combined with each other. Identification takes place via pin code, barcode or RFID (Radio Frequency Identification).



**ORSY®mat FP**  
**The flap vending machine**

This vending machine is ideal for the storage and provision of high-quality, bulky durables and consumables.

In addition, the flap vending machine is used for transparently handling the returnable packaging, for e.g. power tools can be stored, issued and re-stored after use via secure access.



**ORSY®mat RT**  
**The rotating vending machine**

This vending machine is suitable for the securely guided dispensing of a variety of small to medium-sized items, such as drills, bits and sanding discs.



**ORSY®mat HX**  
**The helix vending machine**

This vending machine is suitable for the individual dispensing of auxiliary and operating materials that are in constant demand, such as gloves.



**ORSY®mat DR Light**  
**The drawer vending machine**

The drawer vending machine is particularly suitable for storing, stocking and dispensing high-quality or sensitive items such as tools, maintenance materials, measuring and testing equipment.



More information at  
[www.wuerth-industrie.com/vending](http://www.wuerth-industrie.com/vending)

**The WGT, CHE and DR WGT vending machines can be modularly combined with each other. Identification takes place via PIN code or RFID.**



**ORSY®mat WGT**  
**The weighing system**

This vending machine with its weighing load cells is particularly suitable for withdrawing multiple items at the same time as well as withdrawing at item level.

As the weighing cells are available in different sizes, the system is suitable for managing nearly all types of auxiliary and operating materials. Even large-volume items such as protective suits, leather gloves or large sanding discs can be optimally stored in the ORSY®mat WGT by installing large weighing cells.



**ORSY®mat CHE**  
**The hazardous materials system**

This vending machine is suitable for the safe, needs-based and legally compliant storage of chemical products.



**ORSY®mat DR WGT –**  
**The drawer vending machine with weighing technology**

The system is suitable for managing, stocking and dispensing tools, measuring and test equipment, maintenance materials as well as high-quality items. The technology of ORSY®mat DR WGT is based on precise weighing cells, which save the weight of the product and thereby recognise withdrawal of an item.



# SERVICES

For chemical products,  
tools and occupational safety.



**WÜRTH** | INDUSTRY



**SUPPORT WITH THE RISK ASSESSMENT**



**HAZARDOUS MATERIALS MANAGEMENT**



**CREATION OF PPE PLANS**



**REVISION OF FALL PROTECTION EQUIPMENT**



**INSPECTION OF LADDERS AND STEPS**



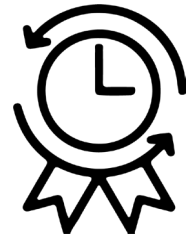
**ORSY®FLEET**



**CUSTOMISED TOOL SETS**



**MASTER SERVICE**



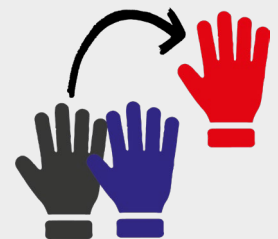
**WÜRTH POWER TOOLS WARRANTY**



**SUBSTITUTION AND RISK MINIMISATION**



**PROCESS OPTIMISATION**



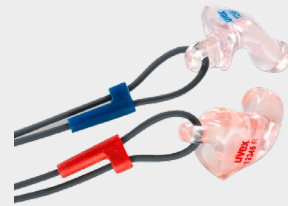
**STANDARDISATION**



**FOOT MEASUREMENT -  
SHOE FITTING**



**TEXTILE FINISHING**



**CUSTOMISED PPE**



**ANALYSIS OF FLEET  
OF POWER TOOLS**



**CUSTOMISED  
TOOL**



**ORSY®ONLINE**



**WEBINARS**



**TECHNICAL SEMINAR**

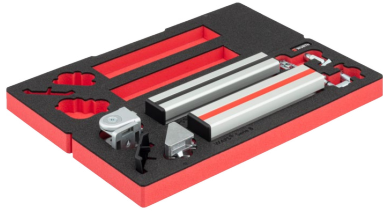


**INSPECTION AND CONSULTATION**



# EFFICIENT FACTORY EQUIPMENT

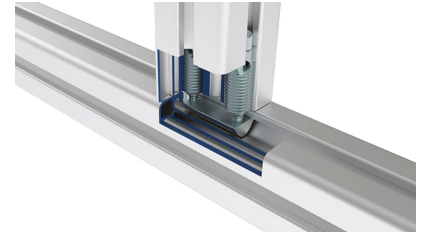
Customised workplace solutions for  
lean processes and higher productivity.



**OPT-I-STORE®**  
**HARD FOAM INSERTS**



**CLIP-O-FLEX®**  
**ATTACHMENT SYSTEM**



**WAPS®**  
**ALUMINIUM PROFILE SYSTEM**



**W-KLT®**  
**WÜRTH SMALL LOAD BIN**



**CUSTOMISED**  
**WORKSTATIONS**



**SYSTEM**  
**FACTORY EQUIPMENT**



**SHELVES**



**ANTI-FATIGUE MATS**



**VEHICLE INTERIOR**  
**EQUIPMENT**



# EVERYTHING IS EXACTLY WHERE YOU NEED

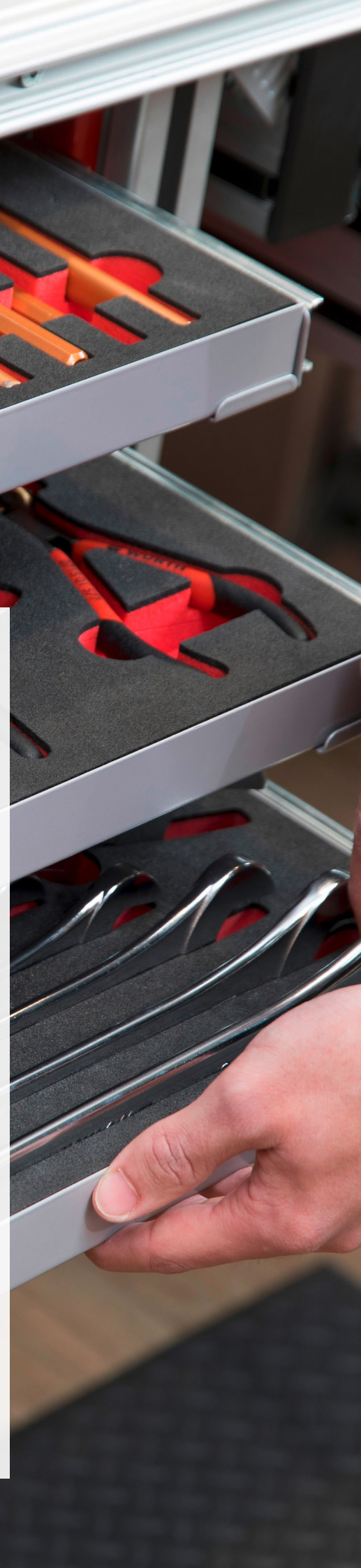
**Customised, ergonomic solutions for lean production and logistics workstations based on lean management**

With the help of our modular system, we create customised, ergonomic workplace solutions for a wide variety of work situations and requirements. Our workplace solutions are suitable for implementing the 5S rules applied in many companies for optimised workplace organisation. The 5S stand for sort, set in order, shine, standardise and sustain and are regarded as the basis for efficient, work relieving and ergonomically improved way of working.

**Ergonomic. Structured. In order. Everything is exactly where you need.**



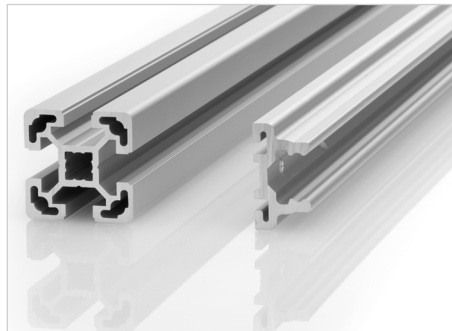
More information in our catalogue  
[www.wuerth-industrie.com/catalogue-iws](http://www.wuerth-industrie.com/catalogue-iws)



# WÜRTH ALUMINIUM PROFILE SYSTEM: **WAPS®**

Short distances and optimised handling are essential aspects of lean production. In this context, it is important for each and every workstation to have an optimum and clear design. Würth Aluminium Profile Systems allow flexible, ergonomic, customised integration in your storage spaces, workstations, assembly areas and vehicles.

**Select the best solution for you out of the following three WAPS® categories or combine them to fit your requirements!**



### **Individual components. WAPS®Components.**

- Trading goods/individual components
- Connectors and profiles
- Compatible with Bosch (SB) and item (SI)

### **Sets. WAPS®Kit.**

Project-related module assembly of connectors and profiles according to the parts lists.

### **Workstations. WAPS®Workplace.**

Apart from customised workplace solutions, we offer you a wide range of standard solutions for mobile and stationary use.



More information in our catalogue  
[www.wuerth-industrie.com/waps-catalogue](http://www.wuerth-industrie.com/waps-catalogue)

# WORKSHOP, OPERATING & STORAGE EQUIPMENT

**Want a workplace customised according to your requirements? Let's set it up!**

Whether you need a single workbench or complete workshop equipment - you can rely on us for quality and well thought-out designs. Thanks to a modular system, you receive all the necessary components by default. Our factory equipment is manufactured within the Würth Group and is therefore "Made in Germany". In addition to our well thought-out standard programme, this enables us to offer solutions according to your individual requirements.

## PRODUCT GROUPS AT A GLANCE



**DRAWER CABINETS**



**COMBINATION CABINETS**



**HINGED DOOR CABINETS**



**WORKBENCHES**



**CABINET WORKBENCHES**



## GEMINI

**The 3D planner for effortless and customised equipping of warehouses, workshops or offices.**

Configure and equip your factory equipment quickly and conveniently - from the workshop, storage rooms to your office. GEMINI makes it very easy for you to set up by directly visualising your planning. The 3D simulation of your premises enables you to see immediately which set up is suitable for your requirements. You have practically unlimited freedom to design and can organise your working environment entirely according to your needs.

**Simple. Customised. True to the original.**



More information at  
[www.wuerth-industrie.com/workshop-equipment](http://www.wuerth-industrie.com/workshop-equipment)

# CLIP-O-FLEX®

## One system – versatile application possibilities

Our attachment system CLIP-O-FLEX® consists of an ingenious rail and clip-on profiles combined with trays, bins, storage shelves and a wide range of holders for the workplace equipment. The workplace is individually developed with these components and the space is optimally utilised.



More information at  
[www.wuerth-industrie.com/clipoflex](http://www.wuerth-industrie.com/clipoflex)



# OPT-I-STORE®

## Customised hard foam inserts: Secure. Robust. Flexible

The OPT-I-STORE® inserts offer the ideal solution whenever the products need to be properly protected or when they need to be transported and stored securely. The hard foam inserts specifically planned for your products offer a suitable place for every part.

The OPT-I-STORE® inserts are manufactured using high-quality, robust materials and are available in a huge variety of colours and thicknesses.

Each insert is cut out from a single piece and can be moulded into any suitable shape so that you can store your tools practically and securely.



More information at  
[www.wuerth-industrie.com/optistore](http://www.wuerth-industrie.com/optistore)

# BINS

## Securely stowed, efficiently organised.

We offer a wide range of bins as a supplement to your workplace. Especially to be emphasised is our patented small load carrier - the W-KLT®: As it has a flap on the front, it is easier to access the goods, transport them safely and reduce the space required!



More information at  
[www.wuerth-industrie.com/bins](http://www.wuerth-industrie.com/bins)



# SHELVES

## Modular storage and organisation systems

From the storage rack, storage shelf, pallet shelf, cantilever shelf, wide-voltage shelf or large shelf to boltless shelf, screw shelf and office shelf, you will find the right one for your individual needs in the company in our portfolio.

We also offer professional solutions for special applications such as Kanban shelves, cable drum shelves, long-sleeved shelves, tyre shelves, slanted shelves, Euronorm storage bin shelves, or work with you to develop a tailor-made concept for your high-bay warehouse, your multi-storey system or your individual industry requirements.



More information at  
[www.wuerth-industrie.com/racks](http://www.wuerth-industrie.com/racks)

# VEHICLE INTERIOR EQUIPMENT. ALL FROM ONE SINGLE SOURCE.

**Made of aluminium, steel and plastic - completely customised, but lightweight.**

Make optimum use of the limited space in your vehicle. Our vehicle interior equipment can be customised precisely to your vehicle and your needs.

## Your benefits:

- Customised planning with the latest 3D software
- Personalised consultation on site for vehicle interior equipment.
- Developed and produced by Würth in Germany
- Whether car or van, we offer ideal solutions for your entire vehicle fleet
- Flexible financing models such as leasing or hire purchase
- TÜV/GS-certified and crash-tested
- On-site installation by certified installation partners on request

**All from one single source: From vehicle interior equipment, tools to personal protective equipment, including services.**



More information at  
[www.wuerth-industrie.com/vehicle-equipment](http://www.wuerth-industrie.com/vehicle-equipment)



**360° solutions**

With an order for a fully set-up, laminated & equipped vehicle.



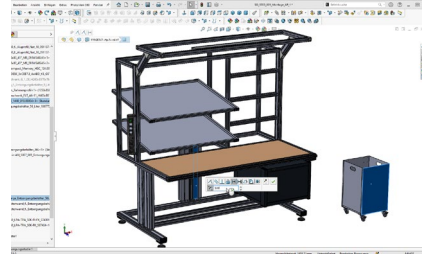
**WURTH | INDUSTRY**

# SERVICES

All about efficient factory equipment



**VISUALISED  
SPACE PLANNING**



**PROFESSIONAL  
CAD PLANNING**



**STANDARD OR CUSTOMISED -  
ALL FROM ONE SINGLE SOURCE**



**ERGONOMIC AND  
FLEXIBLE DESIGN**



**CUSTOMISED CONSULTATION  
ON-SITE**

**TAKE IT LEASY!**

**WÜRTH | LEASING**

Der Finanzierungspartner für Handwerk und Industrie.

**LEASING & HIRE PURCHASE**



# WE ARE THERE, WHERE OUR CUSTOMERS ARE.

## WINWORK®

### Over 60 companies in more than 40 countries

Thanks to WINWORK® (Würth INdustrial NetWORK), you can rely on our products, supply solutions and services with the usual Würth quality at all your company locations. With over 60 companies in more than 40 countries, we offer the ideal conditions for companies with global operations that want to rely on a worldwide partner for indirect materials.

**LEIDUNG**



# WE CORDIALLY INVITE

## **...to get to know us on site!**

Visit our company headquarters - the Würth Industrial Park in Bad Mergentheim, in the north of Baden-Württemberg.

Take the opportunity to visit one of the **most advanced logistics centres for industrial supply in Europe** and experience how we use the latest technology to ensure that your goods arrive at the right place at the right time. You also have the opportunity to take a closer look at our products and intelligent supply solutions! In our showroom - the "World of Würth Industrie Service" - you can view and check out our supply solutions and a selection of our product range.

We would be happy to create a customised agenda for your visit and address the topics that interest you.

**We look forward to welcoming you here! Simply contact us and schedule an appointment.**

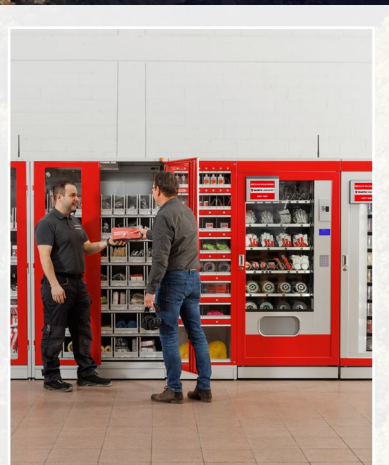
## **CONTACT:**

**Würth Industrie Service GmbH & Co. KG  
Industriepark Würth, Drillberg  
97980 Bad Mergentheim, Germany**

**T +49 7931 91-0  
info@wuerth-industrie.com**



# TE YOU...



# ARE YOU INTERESTED?



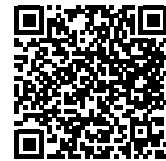
## Connected systems

Download:



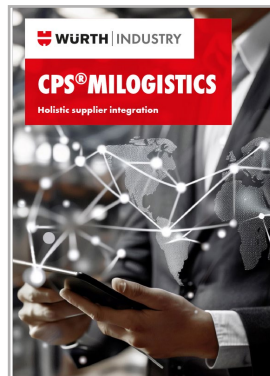
## CPS®RFID – Kanban systems with RFID technology

Download:



## ORSY®mat – Vending machines for operating and auxiliary materials

Download:



## CPS®miLOGISTICS – Holistic supplier integration

Download:



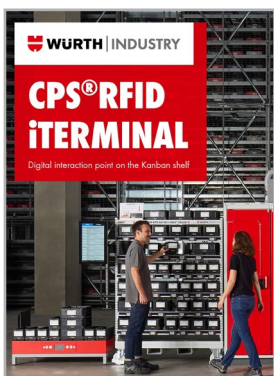
## Smart Workplace – Workstation of the future

Download:



## CPS®miSELF – One system for all parts

Download:



## iTERMINAL – Digital interaction point on the Kanban shelf

Download:



## Industrie with a future

Download:



# BROWSE THROUGH OUR CATALOGUES!



**Innovative Workplace Solutions**

Download:



**Lean Manufacturing**

Download:



**Personal protective equipment**

Download:



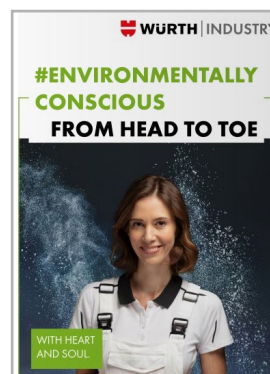
**Exoskeletons**

Download:



**REFILLO®mat – Easy refilling**

Download:



**From Head to Toe**

Download:



**C-Parts. With certainty. Company profile**

Download:



**WÜRTH MODYP Workwear**

Download:



## INDIRECT MATERIALS

**Product solutions. Supply systems. Service.**

Würth Industrie Service GmbH & Co. KG  
Industriepark Würth, Drillberg  
97980 Bad Mergentheim, Germany  
T +49 7931 91-0  
info@wuerth-industrie.com

© by Würth Industrie Service GmbH & Co. KG  
Responsible for the content:  
Heiko Noack, Robin Metzger / Indirect  
Editor:  
Nicola Heckmann, Anett Hoffmann,  
Yvonne Krischke / MW

Printed in Germany. All rights reserved.  
Reproduction, in whole or in part,  
only with the approval.

MW - FA - NH - 250 - 10/2025 - DBRO610034

Our general terms of sale, delivery and payment applicable can be found at [www.wuerth-industrie.com/AGB](http://www.wuerth-industrie.com/AGB)  
We reserve the right to make product changes, which in our opinion serve to improve the quality, even without prior notice or notification at any time. Illustrations may be published as sample illustrations and may differ in appearance from the delivered products. We reserve the right to make errors and do not assume any liability for printing errors.

